



USAID
FROM THE AMERICAN PEOPLE



Community Partnerships to Strengthen Sustainable Development (Compass) Program



■ Rowangchhari, Bandarban, Bangladesh



U.S. Department of Agriculture Forest Service International Programs



30,000 NATURAL
RESOURCE SPECIALISTS



90+ COUNTRIES



EXPERIENCE MANAGING 193 MILLION
ACRES OF FORESTS & GRASSLANDS

WHO WE ARE

We work collaboratively to promote sustainable forest management and biodiversity conservation in more than 90 countries around the globe.

We work with our partners to sustain healthy ecosystems by: addressing climate change, combating illegal logging, protecting migratory species habitat, and controlling invasive species.

We leverage Forest Service expertise in multi-use management of 193 million acres of forests and grasslands.

PARTNERSHIP STRATEGY

We collaborate with numerous international institutions, non-governmental organizations, universities, and private companies to:

- ✓ Build technical capacities
- ✓ Strengthen institutions and governance
- ✓ Develop economic alternatives to unsustainable timber harvesting
- ✓ Enhance global cooperation on climate change



U.S. Agency for International Development



U.S. Department of State



U.S. Trade Representative



U.S. Department of Interior



National Aeronautics & Space Administration





USAID
FROM THE AMERICAN PEOPLE



Compass

Community **P**artnerships to **S**trengthen **S**ustainable Development Program

The USAID Community Partnerships to Strengthen Sustainable Development (Compass) program – implemented by U.S. Forest Service International Programs – takes an integrated approach to supporting natural resource management in Bangladesh. The program’s five components are designed to build competence and leadership in sustainable forest management and help youth gain the skills necessary to lead productive lives, secure employment, and positively contribute to society. All of our components promote gender equality and increased opportunities for women.

Our Primary Objectives

Bangladesh is one of the world's most vulnerable countries to climate change, the effects of which are felt most strongly by people with fewer resources. Floods, cyclones, droughts, earthquakes, and heat waves all pose significant threats, and the mega city of Dhaka tops the charts of the world's most polluted cities by Air Quality Index. Improved natural resource management can significantly strengthen Bangladesh's resilience to natural hazards and changing climate conditions.



ENHANCED CAPACITY

of institutions to manage natural resources and increase tree cover and carbon sequestration in Bangladesh



IMPROVED EMPLOYABILITY

capacity and career opportunities for marginalized at-risk youth



IMPROVED LIVELIHOODS

and quality of life by developing natural resources management-based community enterprises

COMPASS COMPONENTS

1

Youth Conservation Corps | Cox's Bazar & Bandarban | We work with youth from underserved backgrounds to expand their work skills and build their self esteem and commitment to conservation. YCC graduates go on to lead conservation activities in schools and communities and to employ the skills they learned in YCC's 6-month job readiness program. Graduates become tailors, electricians, teachers, and entrepreneurs in the agricultural and service industries.

2

Forest Landscape Restoration with Communities | Chittagong Hill Tracts (CHT) | We work with communities and stakeholders in CHT – the most forested and ethnically diverse region of Bangladesh – to restore degraded hillsides and support environmentally friendly livelihood projects. Compass provides seedlings and training for erosion control and the protection of watersheds, and we support livelihood development. Youth volunteers from YCC contribute to training and community outreach.

3

Forest and Ecosystem Management with Bangladesh Forest Department (BFD) | National | We provide capacity enhancement support to the Bangladesh Forest Department (BFD) for informed decision-making through imparting skills of BFD officials to generate national forest inventory data and national land cover mapping, strengthening technical cooperation on integrating information and geospatial technologies, engaging in technical cooperation to support participation in Reducing Emission from Deforestation and forest Degradation (REDD+), and providing ecosystem service valuation assistance. The Bangladesh government utilizes these results for tree planting programs, community awareness programs, and investments in reforestation.

4

Strengthen the Capacity of Academic and Research Institutions in Natural Resource Management | 7 universities | We introduce new tools and methods for research and analysis, and we helped forestry universities modernize their curricula. Compass-supported university students are using the i-Tree assessment and inventory tool to create a tree census of the National Botanical Garden in Dhaka and to show the value of urban trees. They completed a tree inventory in Dhaka city. Their work informs BFD decision making and conservation efforts.

5

Global Exchange of Natural Resource Knowledge and Skills | National + Global | We support scholarly and cultural exchanges between Bangladesh and US-based institutions, and we create avenues for long-term technical collaborations that strengthen the effectiveness of natural resource management in Bangladesh.

WHERE WE WORK



- Local: Component 1 2 4
- National: Component 3
- Global: Component 5



Youth Conservation Corps (YCC) Bangladesh



Partners



**Motto:**

Engage, Learn, Serve, Lead

Vision:

Vibrant, healthy, and skilled youth acting in their communities to conserve natural resources and earning a sustainable living.

Mission:

Build skills and leadership of youth to empower and improve livelihoods and be environmental stewards in their communities through experiential learning

The YCC Bangladesh program aims to train 240 youth by 2024. To date, 113 youth have completed the program. 72% of YCC graduates have been successfully employed in related industries and/or developed entrepreneurial initiatives.



The YCC Bangladesh program is a 5-month, immersive, residential training program that encompasses mental, physical, and social features devised to empower youth with confidence, teamwork, a spirit of volunteerism, vocational and environmental skills.





YCC trainees receive vocational training on market-appropriate skills





Youth perform environmental and community development activities with remote communities in CHT.



The YCC trainees and graduates conduct cleaning campaigns and awareness sessions in communities to contribute to environmental conservation.



YCC STORY

U Ching Wong Marma (22) graduated from the 2nd cohort training. She took the Tailoring Course as a vocational skill and completed an internship in a tailoring center in Bandarban. The center owner offered her to continue her job in that center after her internship. She now manages the tailoring center and tailors Marma traditional and other dresses form male and female clients. She has set up a fire distinguisher in her tailoring center for safety that she learned from YCC training. She has also installed a roadside plastic waste bin in her village.





YCC STORY

There are new fish-shaped waste bins along the coast of Cox's Bazar because of Risat Kawsar Ishan and Mizanur Rahman. The YCC graduates also built a new toilet in their village and cleaned the canal that captures fresh water. They involve school children in their environmental campaigns, teaching what they learned at YCC. "We conducted an environmental needs assessment for our community," said Ishan, and then they acted on it. Their actions, with community involvement, had an immediate and positive impact on the health and hygiene of their small village. When they aren't teaching kids about littering or doing community projects, the two young men cultivate and sell oyster mushrooms to restaurants up and down the coast.



Forest Landscape Restoration in Chittagong Hill Tracts

১৯৯০ সালের ১২ই জানুয়ারি
১৯৯০ সালের ১২ই জানুয়ারি
১৯৯০ সালের ১২ই জানুয়ারি
১৯৯০ সালের ১২ই জানুয়ারি
১৯৯০ সালের ১২ই জানুয়ারি
১৯৯০ সালের ১২ই জানুয়ারি
১৯৯০ সালের ১২ই জানুয়ারি
১৯৯০ সালের ১২ই জানুয়ারি
১৯৯০ সালের ১২ই জানুয়ারি
১৯৯০ সালের ১২ই জানুয়ারি





Forest resources-reliant communities receive training on conservation of village common forests, climate change and adaptation, ecological restoration, and strengthening women's leadership in restoration activities.



By September 2023, Compass and partners planted more than 350 thousand trees of 89 local species to restore 1000 hectares of degraded forest lands with the communities' active participation.



Community volunteers participate in training on plants, and species and updated monitoring tools and techniques to supervise plantation and restoration activities.



With livelihood training and inputs, FLR participants are meeting their nutrition needs and managing their livelihoods without adding pressure to the natural resources.



Forest and Ecosystem Management with Bangladesh Forest Department (BFD)
Compass works with the Bangladesh Forest Department (BFD) to enhance the need-based technical capacities of its officials.



ICIMOD, Kathmandu, Nepal

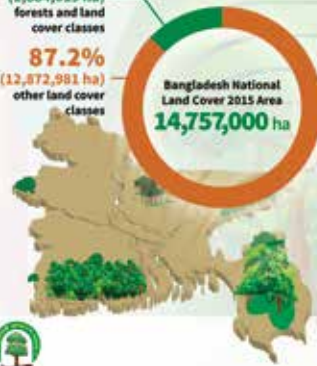
In partnership with the International Centre for Integrated Mountain Development (ICIMOD), Compass organized specialized training for BFD officials.

EXTENT OF FOREST AND TREE RESOURCES IN BANGLADESH

Forest Land Cover Classes of Bangladesh 2015

12.8%
(1,884,019 ha)
forests and land
cover classes

87.2%
(12,872,981 ha)
other land cover
classes



Bangladesh National
Land Cover 2015 Area
14,757,000 ha

Hill Forest **4.63%** 683,852 ha

Bamboo Forest **0.04%** 5,686 ha

Plain Land Forest (Sal Forest) **0.13%** 18,918 ha

Shrubs with scattered trees **4.16%** 614,537 ha

Rubber Plantation **0.16%** 23,484 ha

Forest Plantation **0.54%** 79,299 ha

Swamp Forest **0.0009%** 140 ha

Mangrove Forest **2.73%** 402,185 ha

Mangrove Plantation **0.37%** 55,089 ha

Swamp Plantation **0.004%** 628 ha

Source: GEF (2016). Tree and forest resources of Bangladesh: Report on the Bangladesh Forest Inventory. Forest Department, Ministry of Environment, Forest and Climate Change, Government of the People's Republic of Bangladesh, Dhaka, Bangladesh.



The program appointed forestry professionals to support BFD in national land cover mapping and analyzing of the National Forest Inventory.



Compass conducts quantification and ecosystem services valuation (ESV) research on different forest types with BFD and other stakeholders.



Strengthening the capacity of academic and research institutions in NRM





Compass partners with BFD, BFRI, and universities to strengthen natural resource management through technical collaborations.





Compass equips forestry students with the most updated curricula, tools, and technologies. Many of them are working with Compass in conducting the tree census in National Botanical Garden and developing the country's first-ever urban tree inventory using i-Tree tool. Compass may introduce this mapping in other cities of the country in the future.



“I want to create awareness with my research. To show them the results of their actions. How it affects their climate. And get them to prioritize nature.” Tahrira Jui Era is a researcher at Bangladesh University of Professionals. She’s using i-Tree to take a census of the botanical gardens in Dhaka. The census serves as an inventory of Bangladesh’s most precious plants and it assigns a value to each tree, allowing people to better understand the ecosystem services forests provide.

Promote the global exchange of natural resource knowledge and skills



Compass and its partners are promoting research, academic, and cultural exchange to strengthen the effectiveness of natural resource management (NRM) research, education, and governance capacity through in-person and virtual information exchange, capacity development, and collaboration/networking.



The Forestry and Climate Science (FoCaS) exchange activities is a partnership program with the College of Life Sciences and Agriculture (COLSA), the University of New Hampshire (UNH), for academicians, students, and government officials; webinar series; and graduate studies. Through the FoCaS activities, the program aspires to create avenues for long-term strategic partnerships between Bangladesh and USA-based institutions engaged in the NRM domain.

In addition, Compass facilitates the participation of stakeholders to represent Bangladesh in international arenas, including the USFS International Programs Seminars, and fosters the exchange of knowledge and ideas for innovations.



University of New Hampshire

College of Life Sciences and Agriculture

For more than 150 years, the University of New Hampshire has delivered hands-on learning, research, and work experiences that bring together students, faculty, and private and public partners to create life-changing opportunities and innovative solutions in our neighborhoods and across the world. At the UNH College of Life Sciences and Agriculture, our work in the areas of natural resources, agriculture, biological systems, health and nutrition has helped earn UNH nationwide recognition as a top-tier land, sea and space grant university and our undergraduate and graduate programs combine leading-edge research and hands-on experiences with practical skill-building in the lab and in the field. With more than 70% of students participating in internships and/or research, graduates leave with the skills and confidence to make a difference in their chosen field.



Bangladesh Forest Department (BFD)

BFD under the Ministry of Environment, Forests, and Climate Change (MoEFCC) is the custodian of forests in the country. The Department's vision is the conservation of forests, biodiversity, and socio-economic development through modern technology and innovation. Major activities of BFD are focused on afforestation, reforestation, restoration of deforested & degraded forests and protection of existing forests, biodiversity, and wildlife, reducing deforestation and forest degradation by involving communities through co-management and collaborative forest management, and social forestry.



Bangladesh Forest Research Institute (BFRI)

BFRI is the national institution responsible for conducting research on the usage of forest products, as well as sustainable forest and natural resource management. BFRI works under the MoEFCC. BFRI develops forestry technology like bamboo propagation, mangroves plantation techniques, wood seasoning technology, etc for the BFD, Bangladesh Forest Industries Development Corporation, and other forestry activities.





Institute of Forestry and Environmental Sciences, the University of Chittagong (IFESCU)

IFESCU, an institute of Chittagong University, founded in 1977, provides high-quality education, research, and outreach for the sustainable management and conservation of forest resources and the environment. IFESCU is active in collaborative research projects with several national and international organizations and has received grants from organizations such as the World Bank, FAO, USDA, and USFS. We also focus on capacity building and offer training and workshops for government officials, researchers, and other stakeholders on forestry and environmental sciences.



Department of Forestry and Environmental Science (FES), Shahjalal University of Science and Technology (SUST)

The Department of Forestry and Environmental Science (FES) was founded in 1998 at Shahjalal University of Science and Technology as a part of the School of Agriculture and Mineral Sciences. The forestry department prepares graduates with the necessary skills to identify, clarify, and provide optimal solutions to face forestry and environmental emerging issues and challenges. FES currently offers 4-years BSc (Hons.) and MSc in Forestry.



Forestry and Wood Technology (FWT) discipline, Khulna University (KU)

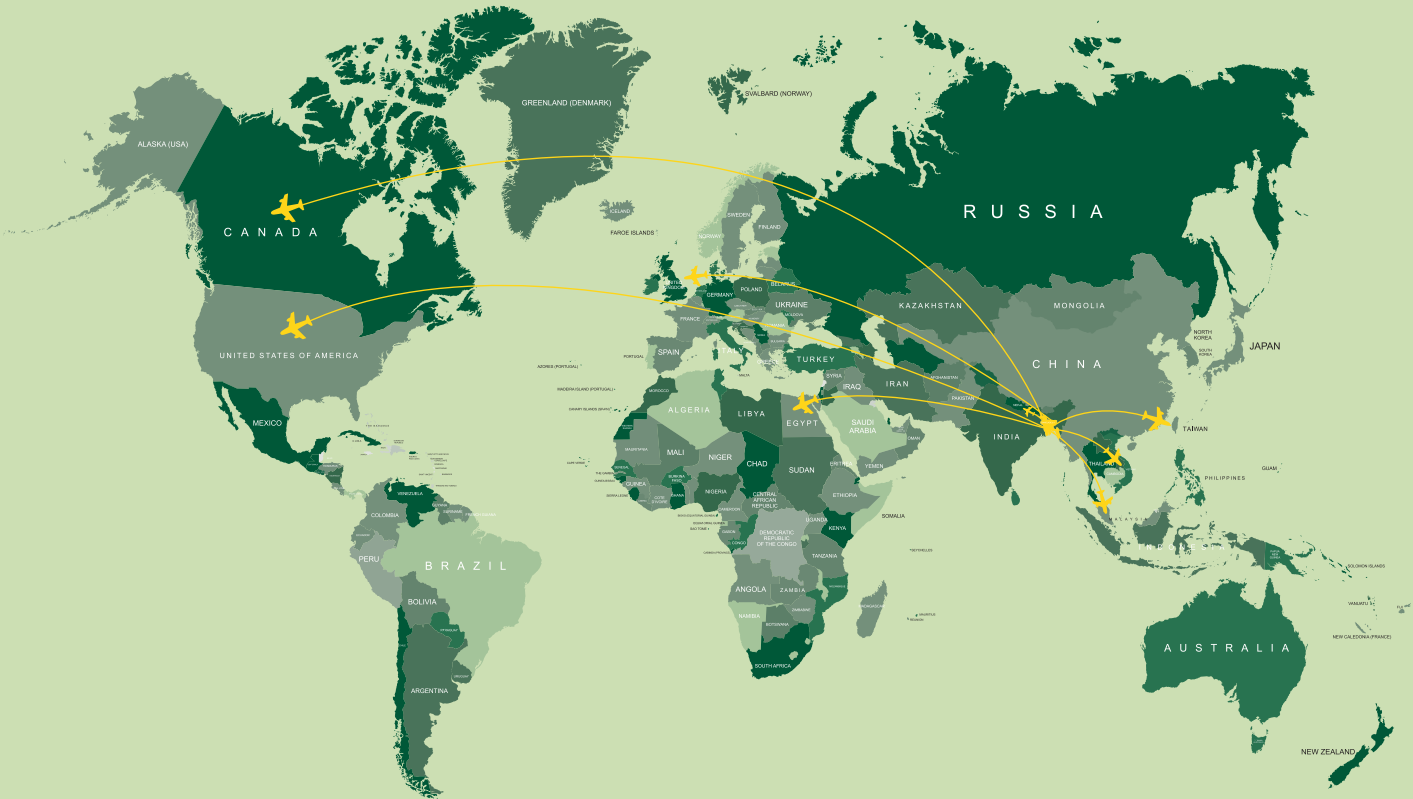
The FWT discipline of KU is one of the pioneer disciplines of KU and the second institution of its kind in Bangladesh, launched in 1992. It offers 4-year Bachelor of Science (Hons.) in Forestry, Master of Science in Forestry, and PhD in Forestry, Wood Science, and related areas of natural resource management. FWT discipline has 24 faculty members, most of whom have obtained higher degrees (MS and PhD) from reputed universities around the world.



Department of Forestry and Environmental Science, Rangamati Science and Technology University (RMSTU)

The DFES is a department of the RMSTU and helps to manage, utilize and protect natural resources and conserve its assets, specifically biological diversity, in a sustainable way. The vision of the Department of Forestry and Environmental Science is to produce versatile graduates with sound knowledge and skills to achieve sustainable development in the fields of forestry and environmental sciences. RMSTU is located in Chittagong Hill Tracts Areas and focused on addressing the local and international issues of forest and environment and mitigating climate change hazards.

Compass footprint across the globe



- USA (Arizona, California, Chicago, Georgia, Montana, New Hampshire, New York, Seattle, Washington DC)
- Canada-Egypt-England-Malaysia-Nepal-Taiwan-Vietnam





University of New Hampshire
College of Life Sciences and Agriculture



All photos are taken by Raiyan Islam, Saiful Islam Shakil, Sing Mong Prue, Miraz Azad, UNH, Compass, USFS/IP



Soil erosion control dam in Rowangchhari, Bandarban

CONTACT INFORMATION

Community Partnerships to Strengthen Sustainable Development (Compass) Program

Ventura Iconia, House# 37 (5th floor),
Road# 11, Block# H, Banani-1213,
Bangladesh

Office Contact: +88-01796662956

Email: info@compass-bd.org

www.usfsbd.org

www.fs.fed.us/global

DISCLAIMER:

This product is made possible by the support of the American People through the United States Agency for International Development (USAID). The contents of this product are the sole responsibility of Compass and do not necessarily reflect the views of USAID, the U.S. Forest Service, or the government of the United States of America.